



## 5-AXIS ROBOTIC PLASMA CUTTING

Danser, Inc. offers the best total plasma and oxy-fuel cutting solutions, combining safety and customer service with premium high-accuracy, high-performance and high-production Hy-Definition® robotic plasma cutting.

### PLASMA CUTTING CAPABILITIES

- 8' x 24' AKS Cutting Systems accu-kut table
- 5-axis bevel head with robotic precision
- High-definition plasma technology offering optimal cutting speed and edge quality with smooth and clean cutting operation and the highest accuracy, rigidity and stability available
- Hypertherm® XPR300 Plasma Cutting System and Software with True Hole® and True Bevel™ capabilities
- Cut thickness chart:

		mm	inches
Pierce Capacity	Mild steel (argon-assist)	50	2
	Mild steel (standard O <sub>2</sub> )	45	1.75
	Stainless steel	38	1.50
	Aluminum	38	1.50
Cutting Capacity	Mild steel	80	3.125
	Stainless steel	75	3
	Aluminum	50	2

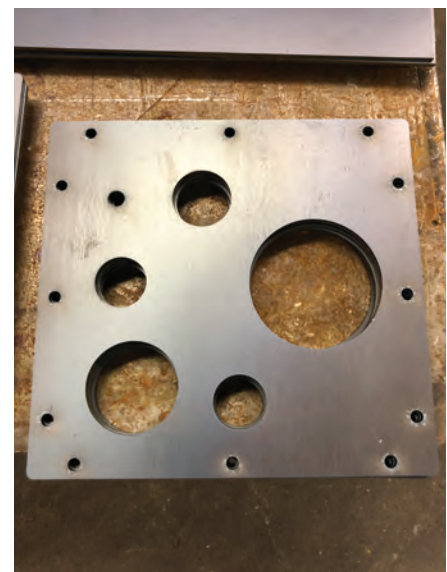
- Etching available for easy part identification
- Samples available upon request

### OXY-FUEL CUTTING

- Very good cut quality, low cutting speed, high heat input
- Wide range of material thicknesses up to 8"
- Smooth, vertical planes of cut



Plasma cutting 330 Alloy.



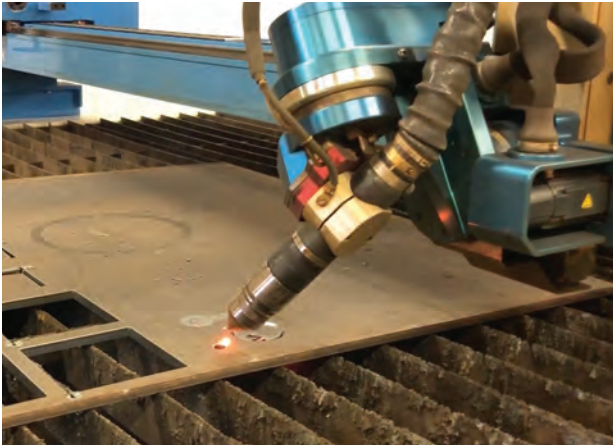
Plasma cut carbon steel parts.



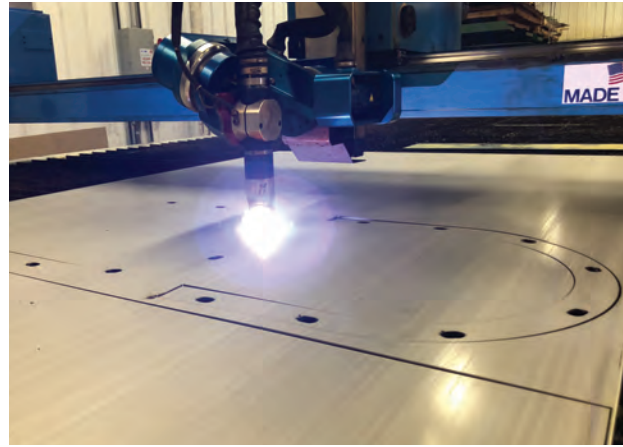
Plasma cutting 330 Alloy with air and water shielding for more precise cut.



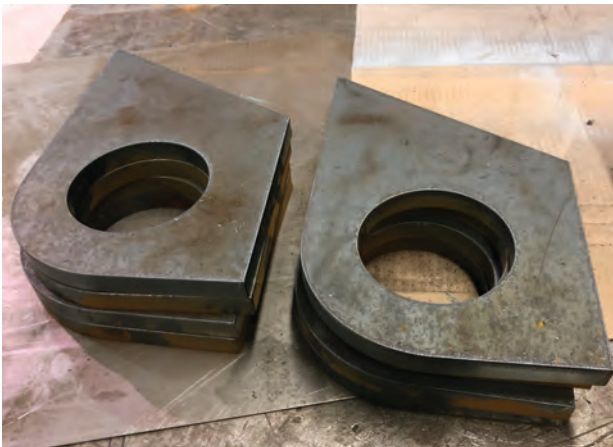
Beveling 1/2" carbon steel plates.



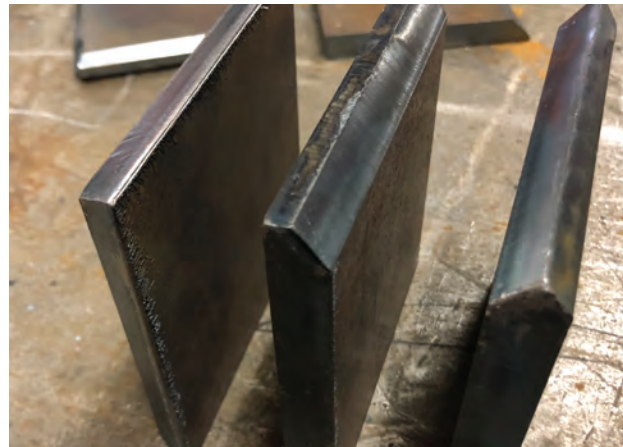
Plasma cutting countersunk hole in 1/2" carbon steel.



Plasma cutting fittings in 1/4" 304 stainless steel.



Plasma cut parts in 3/4" carbon steel.




Examples of beveling capabilities.


## ALWAYS SOLVING

- Outstanding Safety Record
- Over 80 years of experience
- Flexibility without sacrificing safety or quality
- Broad capabilities for fabrication, installation and service

## DANSER, INC.

 1758 Murphytown Rd, Davisville, WV 26142

 304-679-3666

 sales@danserinc.com

 www.danserinc.com